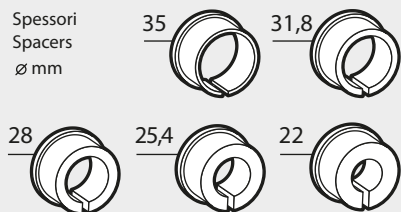
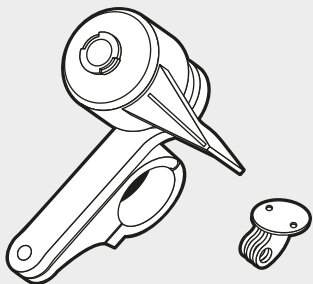
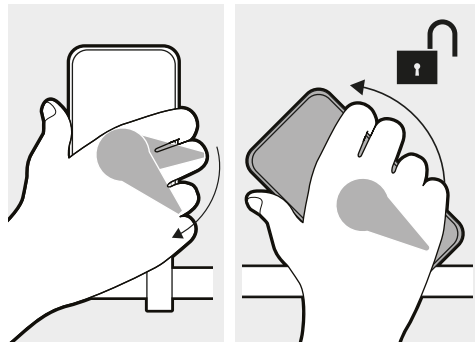
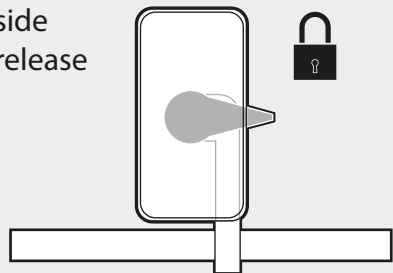


Art. 91773

COMBO 2.0

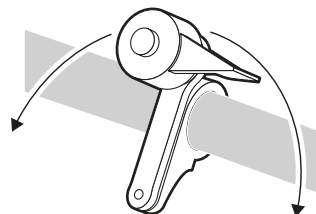


Quick side release



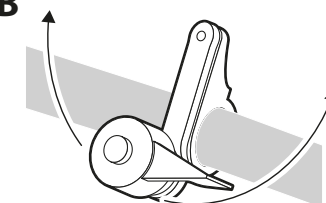
Option A

Verso l'alto
Upwards

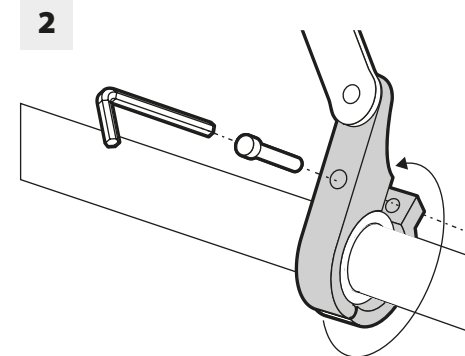
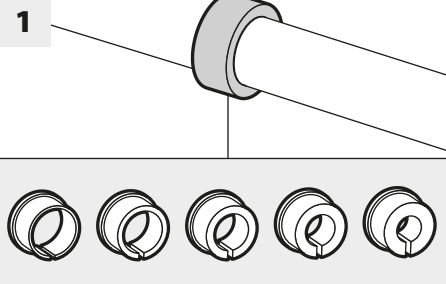


Option B

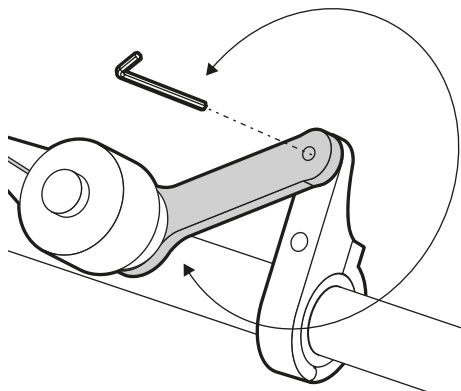
Verso il basso
Downwards



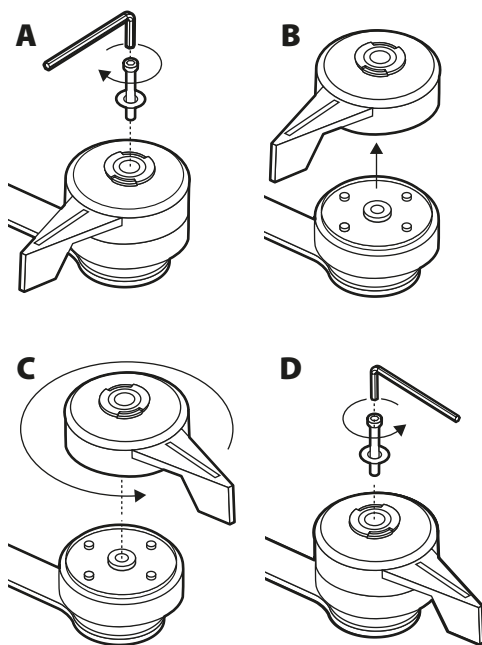
Video di installazione
Installation video



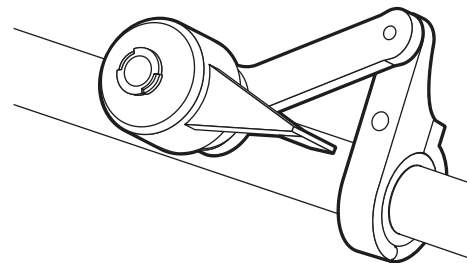
3



4



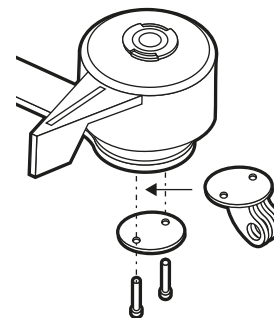
5



Action cam

Adattatore per Action Camera incluso, utilizzabile solamente con la testa rivolta verso avanti.

Action camera adapter included, can only be used with the head facing forward.



IT Le viti potrebbero allentarsi a causa di circostanze incontrollabili, controllare ed eventualmente serrare prima dell'installazione. Un serraggio eccessivo delle viti potrebbe danneggiare il prodotto, si prega di regolare con cautela.

EN Screws might loosen due to uncontrollable circumstances, simply check and tighten it prior to installation. Over tightening the screws might damage the product, please adjust with caution.

FR Les vis peuvent se desserrer en raison de circonstances incontrôlables, vérifiez et serrez si nécessaire avant l'installation. Un serrage excessif des vis peut endommager le produit, veuillez ajuster soigneusement.

ES Los tornillos pueden aflojarse debido a circunstancias incontrolables; verifíquelos y apriételes si es necesario antes de la instalación. Apretar excesivamente los tornillos puede dañar el producto; ajústelos con cuidado.

DE Die Schrauben können sich aufgrund unkontrollierbarer Umstände lösen. Überprüfen Sie dies und ziehen Sie sie gegebenenfalls vor der Installation fest. Zu starkes Anziehen der Schrauben kann das Produkt beschädigen, bitte sorgfältig einstellen.

NL De positie van de ontgrendelingshendel kan worden aangepast (door deze tegen de klok in te draaien). Schroeven kunnen losraken als gevolg van oncontroleerbare omstandigheden, controleer en draai ze gewoon vast voordat u ze installeert.